

The Legend of 2019



The Oracle has revealed the Sacred Odu

Ìrosù Ọwọnrín

The dust is settling after the tumultuous 2018 year that brought us unexpected changes and for some, a necessary purging, the disruptiveness of clearing away that which was obsolete from our lives. It is now time to lay down the foundation for a new phase of our lives...

One that promises financial stability and prosperity if we don't lose our heads.

Success will greatly depend not only on a steadfast commitment but also our ability to be patient with ourselves and not beat

our interactions with others, but also be at peace with ourselves.

A solid foundation, one that will not crumble under pressure, requires a thoughtful and methodical approach. We must slow down now and give ourselves more time for introspection to get it right.

“Truth and character” should make up the cornerstones of a foundation to be truly rewarding and everlasting...we must be **“true to ourselves”**...and treat yourself and others in such a manner.

Ìrosù is telling us to slow down now to get it right!!! This is the type of energy that says, “measure twice, cut once,” “correct it, or you can’t move forward.” In turn, we’ll make a big break-thru on the emotional and spiritual side as indicated by **Ọwónrín**.



mind...free the mind-chatter that has the potential of turning daily life upside down. It is so important THIS year to do the work on your mental health!

The Ifa Foundation is committed to teaching you how to achieve this...so get yourself ready for building a successful life. The universe is providing you a pathway with the layout of this year's legend.

The Oracle has defined specific tools that can assist you in strengthening and enabling you to flow in more of a creative way and feel the amazing illumination feeling this year offers us.

Through meditating, nature time and thoughtful eating...along with creating daily connecting time with your Ancestors, Ori, Orunmila and all the Orisa...you will create the matrix for living a sacred fulfilled life.

Releasing your outer world for a period of time and go into a state of being where you can illuminate your inner core ...and open up to see... what is the vision you have for your life. What is it that is your Truth. What is your purpose. What is your legacy.

And BE really committed to the building process!!! And of course be realistic and honest about these goals and expectations. We must not put undue stress on our heart and our emotional body; there must be harmony between them to stay "on path". The results will be impressive!

On the **spiritual and emotional** side, a part of us that we're not always aware of, mainly experienced on a sub-conscious level, we have **Ògúndábèdé** (Ògúndá Ogbè) that calls for honesty and integrity. We must remain true to ourselves to navigate our spiritual path effectively and be honest with our emotions. It's not good to dismiss or suppress our feelings; we must acknowledge these emotions and deal with them now. **Ògún** will reward the effort by clearing our path to have more meaningful relationships.

Create space in your daily world to create harmony. Release responsibly and regularly. Find "your way"...as each of the Mother nature's elements does. Think about it...everything sheds and renews in our universe! Our ancient Mother's shared the wisdom that a healthy mind and a healthy body creates a healthy energy

Attention!... **Ògún** is the primary Òrìṣà for 2019, and the message comes through **Ìrosù Ọwónrín**, the **same Odu that was cast for the 2019 path**, emphasizing the importance of understanding and aligning with **Ògún** to gain the most benefit.

The **Ògún** energy matrix closely associates with how we make a living, our jobs, and career. Any area that involves independent work of some kind, including hobbies will significantly benefit us this year if we apply ourselves. Remember that **Ògún** energy will strengthen us to be that warrior for what we know is our Truth.

We can tap into the **Ògún energy for building and how to use spiritual tools to assist us.**

Orisa Ògún is involved in issues of life and death...survival and safety. We should stay very focused and aware. Think ahead! Think preventative! As you will be clearing paths through some of life's jungles...you will want to have the right tool to assist you.

Orisa Ògún teaches us about dealing with “truths & consequences,” and how not to tolerate half-truths, deception, and outright lies. If you behave with “good character” and live your truth...your life will be in an abundant flow.

Ògún energy resonates with law enforcement and the legal profession...if needed, call upon this energy to mitigate any issues in this arena.



These two sacred tools have been revealed by the Ifa Oracle to assist us this year:



To fully honor the **Ògún** energy...These tools are created with your birth name, birthdate and each of your coded Life Paths. Iyanifa Nana Vassa will be infusing your unique information into the sacred herbal waters...along with working with the sacred Earth inside the vortices of the powerful Ogun shrine.

In addition...working with the sacred herbal infused soap...you will be able to clear away the barriers of your past struggles...heal and nourish. No longer will you need to drag along that which is NOT part of your future build. Take action and get on top of things this year. It will be worth it. Upon your commitment, you will immediately sense the shifts taking place.

When aligned, you can be taken into different planes of existence to expand your base. When you have this level of grounding, the world of opportunities appropriate for you will be revealed. With your ability to step into this sensation within yourself, focused,

The structure of this spinal tool comprises of metals, minerals, and colors that link you into the nature of the wisdom of **Ògún**. The creation of these elements will anchor you into a very core space and ground you into the roots of the energy, we have the uniquely personalized prayer beads consecrated in an ancient style. A sacred tool to be used in meditation and includes a potent ceremonial soap.

(Prayers and Instructions will be included)

Everything will be done in ritual with high integrity. Your tools will be only handled by Iyanifa Vassa and Oluwo Philip, shipped to you Priority Mail immediately.



Ìwòrì Òtúrá is the type of energy that makes us retreat to the inner sanctum of our minds, giving us a needed break from it all to recharge our energy. Ìwòrì on the temporal side is making us think, inspiring passion for triggering a transformation, an ideal place to have this Odu in destiny as we should always strive to better ourselves.

However, there's a fine line between introspection and overthinking (worrying) and scattering our energy in daydreaming. While it's important to give ourselves ample time to think and plan, we can't stay in our heads indefinitely and wish for things to happen, we must take the next step and **act!** See explanation below on "Victory over difficulties".

Remember that **Òrìṣà Ògún** is leading us in 2019 and is not only a **warrior** but a **builder** who wants **action** from us. Trust that **Ògún** will clear a path for you when you're finally ready to implement your plan and advance your destiny. You need to believe in yourself and allow that warrior and builder spirit within you to come out.

Òrìṣà Ògún energy opens up our gateway to our passion...what drives us in our hearts...taking action now to go for it beyond

Develop personal loyalty to who you are and your purpose for being here.

Attention!... **Ìwòrì Òtúrá** came up for both “Destiny” and “Victory over difficulties,” so these two subsets overlap, and we should interpret together. It’s very logical when you think about it; we can’t advance our destiny if we don’t overcome difficulties.



Moderation and dealing with our emotions are the keys to good health in 2019, we must take responsibility for our well-being, both for our bodies and our minds. But it doesn’t mean giving up the things you like, just that you enjoy life without undue stress.

Ọkànràn...while being the extremely powerful energy of the Mothers...the sacred seers...protecting us from harm; Ọkànràn also has a gentle nature and speaks of creating harmony between the heart and mind. Getting organized and seeing the long-term... creating mental order and grounding into how to anchor our personal spiritual path through quieting the mind using meditative prayer. Becoming more aware and truly honoring our senses... building trust with our inner self...and to be “*here and now*,” realizing that the past and the present are not as important as living in the present moment. When we bring our minds to the present, neither “worries about the future” nor “regrets about the past” will have a grip on us.

Negative emotions tend to raise the levels of cortisol and adrenaline, our “*fight-or-flight response*” which stresses the body significantly. We must let go of hurt and anger as these strong emotions take away our zest for life, so open your heart to gratitude, forgiveness, love, and joy.

Ịrosù on the emotional side is slowing us down; in fact, it will be a struggle to move past our emotions until we finally address them. Ịrosù is the type of energy that says, “**measure twice, cut one**”, “**fix it, or you can’t move forward.**”

Success: Ìdí Òtúrúṣọ̀n

The pressure to succeed will challenge our character, can we accomplish without compromising our beliefs and principles? Ògún is a Òrìṣà that insist on truth and **Ìwa-Pẹ̀lẹ̀** (*kind and gentle character*).

Ìdí is the type of energy that makes things happen; we experience it as a restlessness that pushes us to act, a feeling that we're running out of time. But we need this energy to achieve success.

However, pressure can challenge our character and tempt us to cut corners which would ultimately sabotage our success. We may also dwell on past mistakes and regrets that keep us stuck in the same place instead of looking optimistically about the future. **Òtúrúṣọ̀n** on the emotional and spiritual side is a sign that emphasizes good character, and we must keep in this mind.

Relationships: Ìká Òfún

Some people come into our lives for only a brief time, but in that short period, they may leave a lasting impression, and we may find ourselves thinking about them long after they are gone. Others, stay with us for a more significant part of our lives, becoming almost an extension of who we are, so close, that sometimes we take them for granted, forgetting that they have a personal destiny to fulfill.

Ìká appears on our temporal (*consciousness*) side, a sign of birth or coming together, the beginning of relationships to put into context. While we may not know how long they will stay with us, we need to appreciate these magical moments so that we have no regrets later on.

Òfún appears on the emotional side, reminding us of the blessings that these relationships are in our lives. Òfún is a

we move from one phase to another, there's an implied continuity of experiences. **Ìká Òfún** is the signal that we're ready emotionally for a new cycle to begin.

May there be nothing left unsaid in your relationships from beginning to end, express your love tenderly and openly share your life, grow together until such a time when this is no longer possible.

Ìká Òfún speaks of the need to give to receive, loving fully. I'm reminded of a Beatles' song lyrics "...and in the end, the love you take is equal to the love you make."



Òkànràn is about "**temperance**," our ability to express restraint, tolerance, patience and to respond with a calm demeanor, an ideal place to have in the area of the family for the frantic pace of daily family life can be overwhelming at times.

A functional family is one that expresses "emotional intelligence," the ability to discern emotions and the impact it has on self and others. We learn to love and trust from our family; these are our first meaningful bonds in life that help us become well-adjusted individuals. The family nurtures the development of our ego when we're young while still setting boundaries to keep us safe. Our roles in family life will invariably change as we mature and set out to form new family branches.

As a result of "temperance" on the temporal side, **Ogbè** on the emotional side brings out "openness," the ability to have genuine, open communications with our family. **Ogbè** is about living up to our full potential, a sign of infinite possibilities that we can manifest once we have harmony. Using the energy of pure white light to see the positive and clear the dark and negative.

Victory: Ìwòrì Òtúrá

Our ability to face adversity has a much to do with our current “state of mind” and “spiritual awareness,” do we see difficulties as opportunities to learn and advance our destiny, or a provocation that triggers our fight-or-flight response, thus upsetting and angering us?

Ìwòrì appears on our temporal (consciousness) side providing us with opportunities for a greater sense of awareness, being more thoughtful and forward thinking to manifest inner peace as indicated by **Òtúrá** on the emotional and spiritual side (sub-conscious). Inner peace is important! For **Òtúrá** connects us to the divine spiritual realm to receive **Àṣẹ** (universal life force), blessings that are essential for our well-being.

[* **Àṣẹ** is the correct spelling, but also written as pronounced, “Ashe” or “Ache”]

Ìwòrì Òtúrá is a promising sign of self-empowerment for we need to move beyond the “blaming others” or “beating ourselves up” when life becomes too complicated, and instead, start asking, what can I learn from this? ...Because once we figure that out, we can let it go and move on. Sounds simple enough, but we all do it, we get angry, frustrated and dwell in our misery, worrying and feeling sorry for ourselves when things go wrong instead of trying to figure things out.

“Victory over difficulties” and “Destiny” can be addressed by aligning ourselves with **Ògún**, the warrior and builder (for self-empowerment), **Obàtálà**, the intellect (for clarity and rational thinking), and **Òrìṣà-Okò**, grower and cultivator (our ability to plant seeds for the future, nurture and care for those seeds, and patiently wait for those seeds to yield results).

The reading indicated that two other **Òrìṣàs**, **Obàtálà** (Ìkà Ìrosù) and **Òrìṣà-Okò** (Òwónrín Òtúrá) would provide additional support to help us balance our energies throughout the year.

Sacred Tool for Obàtálà:

Obàtálà rules the mind, our intellect, and provides clarity, rational and logical thinking. He brings a message via **Ìká Ìrosù** to use your head and engage in mental stimulus and healthy competition to attract solutions, popularity, and recognition. **Obàtálà** will help you with any critical thinking requiring logic and common sense.



It is in our best interest to pay close attention to your thoughts and the direction they're taking us. We must be very disciplined and

towards our growth.

Misting your head daily with the sacred, blessed herbal potion, created with infused prayers of the **Obàtálà** energy will enhance your ability to stay refreshed and focused, maintaining a level of discipline of intention and expansion!

Iyanifa Vassa (*crowned Ògún*) and **Oluwo Philip Neimark** (*crowned Obàtálà*) will sit together with both halves of your personal Geode crystal in deep prayer meditation inside the **Obàtálà** shrine at “**Ola Olu**” blessing your sacred tool, preparing it to assist you in communicating with the divine energy of **Obàtálà**. Then one half of the Geode will be left inside the **Obàtálà** shrine and will work as a telecommunicator with the other half to be shipped to you along with the Sacred Potion Mind-Spray.

Upon spraying your head with the herbal potion and clasping the crystal Geode half with both hands, you will blow your breath into it to create the energy shift, a truly emotional experience that will connect you with Obàtálà. Your senses will open up as you enter a sacred space of peace and stillness, allowing your mind to be clear and free. You will then align your pure intentions for growth and expansion, your truth.

Everything will be done in ritual with high integrity. Your tools will be only handled by Iyanifa Vassa and Oluwo Philip Neimark, shipped to you Priority Mail immediately.

Prayers and Instructions will be included.



Òriṣà-Oko, associated with cultivation and farming, brings a message via Ọwónrín Ọtúrá about growth and progress, but you'll need patience and effort to make that happen, “a seed takes time to sprout and to yield a harvest ultimately.” **Òriṣà-Oko** ties to the earth energy complement Ògún very well.



Open the portal to the energy of **Òriṣà-Okò** via the consecrated, energized crystal prism pendant. This spiritual tool will tap into the energy of the Raven, a crafty, resourceful, trickster spirit, who is all “seeing” and “knowing” and brings about metamorphosis and order out of chaos.

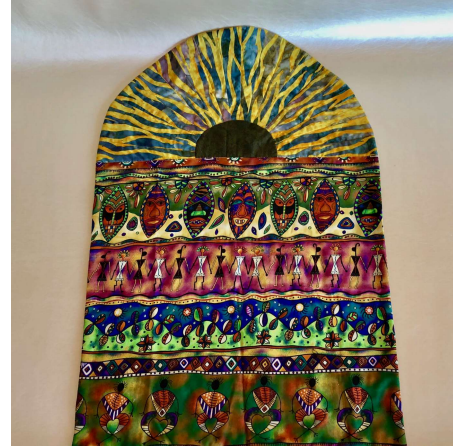
Òriṣà-Okò, the Òriṣà associated with farming and cultivation, the type of energy that we need now to grow and advance our interests, it creates a healing space to make you stronger and manifest your full potential.

Both the Loquat Crystal Prism with egg drop pendant and the carved leather piece (which can be worn as a necklace or carried on a staff) will be fully aligned with the **Òriṣà-Okò** energy matrix. The spiritual tool is created at the **Òriṣà-Okò** shrine by Iyanifa Vassa and Oluwo Philip Neimark.

Everything will be done in ritual with high integrity. Your tools will

Sacred Prayer Mats

One-of-a-Kind....Quilted with Authentic African Fabrics



Each day... as you pray on your sacred Prayer Mat..you will build the ase of your connecting.

It is a truly an amazing feeling to go each new day and feel what is now there to tap into.

Each Prayer Mat we offer is a one-of-a-kind.

They are created by Iyanifa Vassa and her Mother, Nana BJ.

The fabrics are meaningful and the quality of the construction and quilting...divine.

Each Prayer Mat will be blessed in your name.

Focused on expansion this year...each of the new connection tools will amplify and assist and elevate your life into what is possible.

YOU WILL BE ABLE TO GO DEEPER INTO THE VORTICES OF ENERGY AND HAVE AN INCREDIBLE PERSONAL EXPERIENCE THAT BRINGS AN INTERACTION OF FREQUENCIES THAT WILL BUILD YOUR ABILITY TO HAVE AN INCREDIBLE YEAR! THE TRIANGULATION OF THE THREE ORISA...OGUN, OBATALA, AND OKO WILL INTERACT AS A MATRIX THAT WILL CREATE THE BALANCE AND ALIGNMENT FOR 2019!

"Personal Reading" with "The Legend of 2019"



Integrating your "Personal Reading" with "The Legend of 2019" creates your sacred compass for expanding your destiny.

Iyanifa Vassa has opened the opportunity for a personal Year Reading threaded together with the Oracle cast by the Ifa Foundation for 2019.

Set aside the time for this. The specifics for your particular situation will be revealed and you will have direct access to the answers. A date can be set up by contacting Iyanifa Vassa directly through the order placed here. You will hear back shortly for the setting of the date.

The Illumination Retreat



[Subscribe](#)[Past Issues](#)[Translate ▼](#)

in nature using ancient techniques to enter the Sacred Portals.

1,2,3 day Personal Immersions that could include:

"The Detox"- spiritually, mentally, emotionally and physically...

"The Opening and Clearing"- the layers of lifetimes of issues...

"The Destiny Empowerment"- connecting to your purpose and legacy...

"The Ancestor and Lineage Experience"- sacred rituals to enter the portals

Connect with Vassa to personalize your retreat experience...

Call at 386-214-6489 or email at connect@vassamatrix.com

EXPAND YOUR LIFE THIS YEAR...LIVE YOUR LEGACY



Click to explore the many projects that the Ifa Foundation sponsors Free of Charge.

The Ifa Foundation International is a 501-C-3 and has been in existence since 1980. All donations are tax deductible.



[Forward to a Friend](#)



[Facebook: Ifa Foundation International](#)

www.ifafoundation.org

www.ifacollege.com

www.spiritualtools.org

copyright © 2019 all rights reserved.

IYANIFA VASSA WELCOMES YOU TO CONNECT WITH HER...

[Subscribe](#)

[Past Issues](#)

[Translate ▼](#)

Our mailing address is:

Ifa Foundation International
P.O. Box 14, Flagler Beach, FL 32136



Oluwo Phil Neimark

[unsubscribe from this list](#) | [update subscription preferences](#)